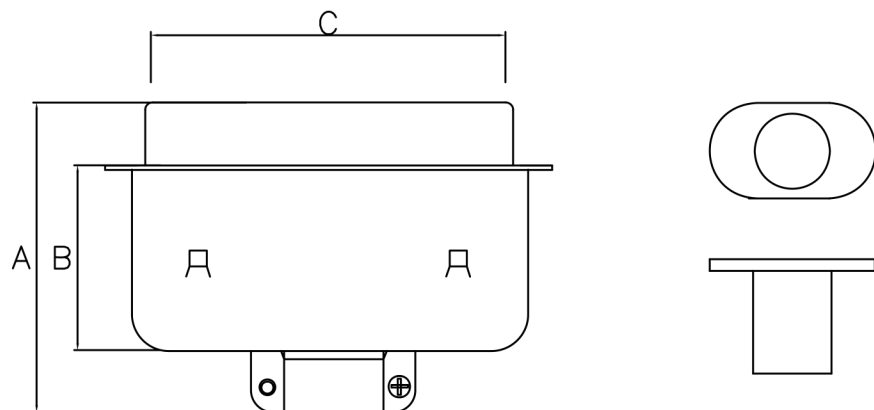
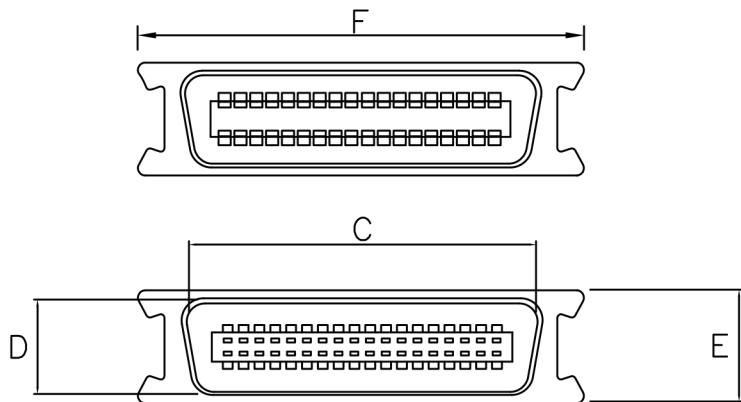


Specification:

Insulator: High temperature, thermoplastic with g.f,UL94v-0  
 Contact: Copper alloy,t=0.25mm  
 Shell: Spcc,t=0.40mm,50P Front-shell , t=0.60mm  
 Current rating: 1 A Max.  
 Dielectric withstanding voltage: 750 V(ac) for 1 min.  
 Contact resistance: 30 Milliohms Max.  
 Insulation resistance: 1000 Megohms Min.  
 Total mating force: 9.0 Kgf Max.  
 Total unmating force: 5.0 Kgf Min.  
 Temperature range: -55°C to +85°C



8	Back-shell	
7	Front-shell	
6	Clip	No finish
5	Contact	Selective Au plated on mating area
4	Contact	
3	Contact	
2	Contact	
1	Housing	Black
No.	Name	Finish

CIRCUIT	A±0.2	B±0.2	C±0.2	D±0.13	E±0.2	F±0.2
14	41.4	21.2	25.5	12.25	15.3	38.0
24	41.0	21.2	36.4	12.25	15.3	48.8
36	42.4	22.6	49.3	12.25	15.3	62.0
50	45.0	24.8	64.4	12.25	15.3	77.0

DRAWING No.

APPROVED BY

MEI

CHECKED BY

BECKY

DRAWING BY

LCH

UNLESS OTHERWISE SPECIFIED TOLERANCES ARE

.X ±0.3  
.XX ±0.20  
ANG. ±1°

SCALE

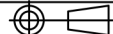
NONE

REV.

A0

UNIT

mm



NO.

REV.

NEW RELEASE

REVISIONS

CHK

DATE